



CAROUSEL

ROYSTON CAROUSEL, RADIUS STYLE



POS compartments

STANDARD FEATURES

- Pre-wired electrical harness
- Photoelectric belt control with auto shut off
- Seamless double-ply front belt
- 36" or 48" diameter Carousel
- Bag racks
- Customer specified Scanner Kit
- Cash stand with configurable compartments
- Compartments for POS components
- Easy-access electronics door (front module)
- Large cashier footrest with protective stair molding
- "Set aside" on top for crushables
- Locking pin locks carousel in place when not in use
- Storage for bags below
- High-impact cart bumper
- Lower cart molding
- Clean-out tray
- UL approved

CUSTOMER-FRIENDLY CHECKOUT

Maximize your customers' checkout experience with Royston's Carousel Checkstands. The belt quickly moves product to the cashier for an easy scan-and-bag operation. All equipment, including the cash drawer location, is ergonomically designed for efficiency and safety.



Top "set aside" for crushables and bag storage



High-impact cart bumper



OPTIONS

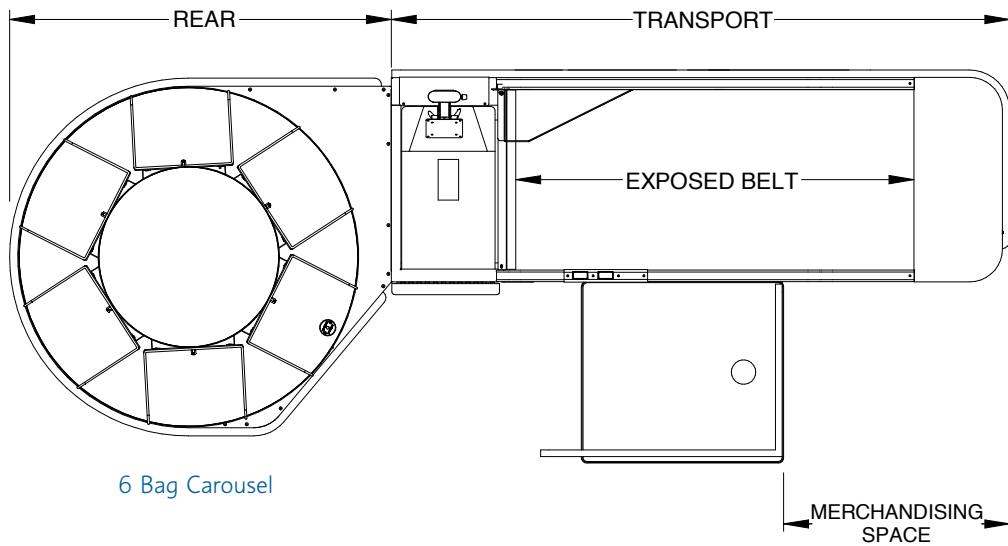
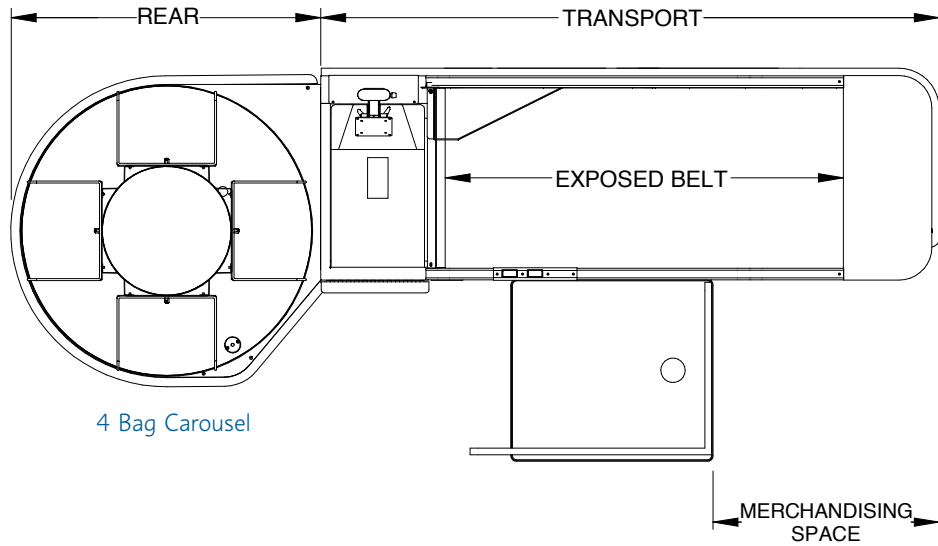
- 4 or 6 bag rack
- Printer stand in lieu of cash stand
- Locking utility drawer
- Four compartment locking drawer
- Fixed or pullout CPU shelf
- Adjustable keyboard holder, tray or touch screen
- VESA mount monitor post (flat screen)
- Checkwriting platform, with or without plex
- Product diverter
- Holder for EFT/debit card reader
- Cashier cushion (lean pad)
- Aisle close off
- Trash receptacle
- Surveillance mirror on cash stand
- 20 amp outlet for beverage coolers
- Exterior utility outlet
- Customer order divider bar set
- Lane Hawk provision
- ADA checkwriter
- Wide choice of laminates or paint colors



Scanner to customer specifications

WOOD CAROUSEL • RADIUS STYLE								
Transport	54"	60"	66"	72"	78"	84"	90"	96"
Exposed Belt	29"	35"	41"	47"	53"	59"	65"	71"
Merchandising Space	9"	15"	21"	27"	33"	39"	45"	51"
Rear Diameter	36"				48"			

METAL CAROUSEL • RADIUS STYLE								
Transport	58"	64"	70"	76"	82"	88"	94"	100"
Exposed Belt	31"	37"	43"	49"	55"	61"	67"	73"
Merchandising Space	10"	16"	22"	28"	34"	40"	46"	52"
Rear Diameter	36"				48"			



CHECKOUT DETAILS

Deck Color:.....

Exterior Accent Panel Color:

Exterior Bottom Panel Color:

Interior Color: Black Almond Gray

Cart Bumper Color:.....

Cart Bumper Height:

Scanner Brand & Model:.....

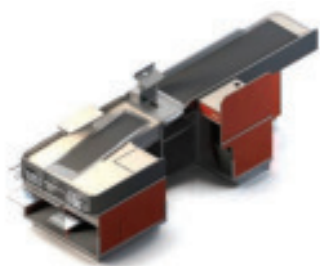
Cash Drawer Brand & Model:

Cash Drawer Dimensions, HxWxD:

Keyboard Brand & Model:.....

Monitor:.....

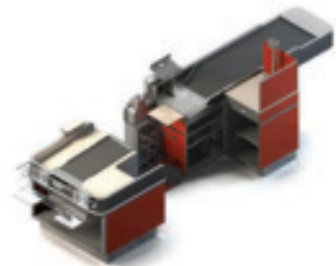
EFT/Pin Pad:.....



Belted Takeaway



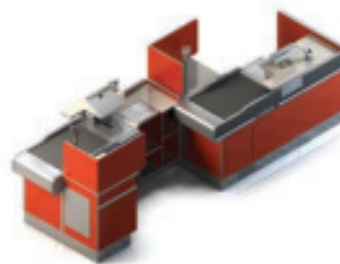
Carousel



Extend-A-Belt



Manual Pass



Express